

Colour can be used for many different reasons.

(a) State an appropriate colour to use in the following situations.

(i) To represent something that is safe for the environment.

Colour

(ii) To represent that something is cool.

Colour

(iii) To represent something that is dangerous.

Colour

(iv) To contrast with blue.

Colour

(v) To harmonise with blue.

Colour KI 5

(b) State the effect created by using a receding colour for the background of a presentation drawing.

Effect

..... KI 1

(c) State what must be added to a primary colour in order to obtain a tertiary colour.

Answer

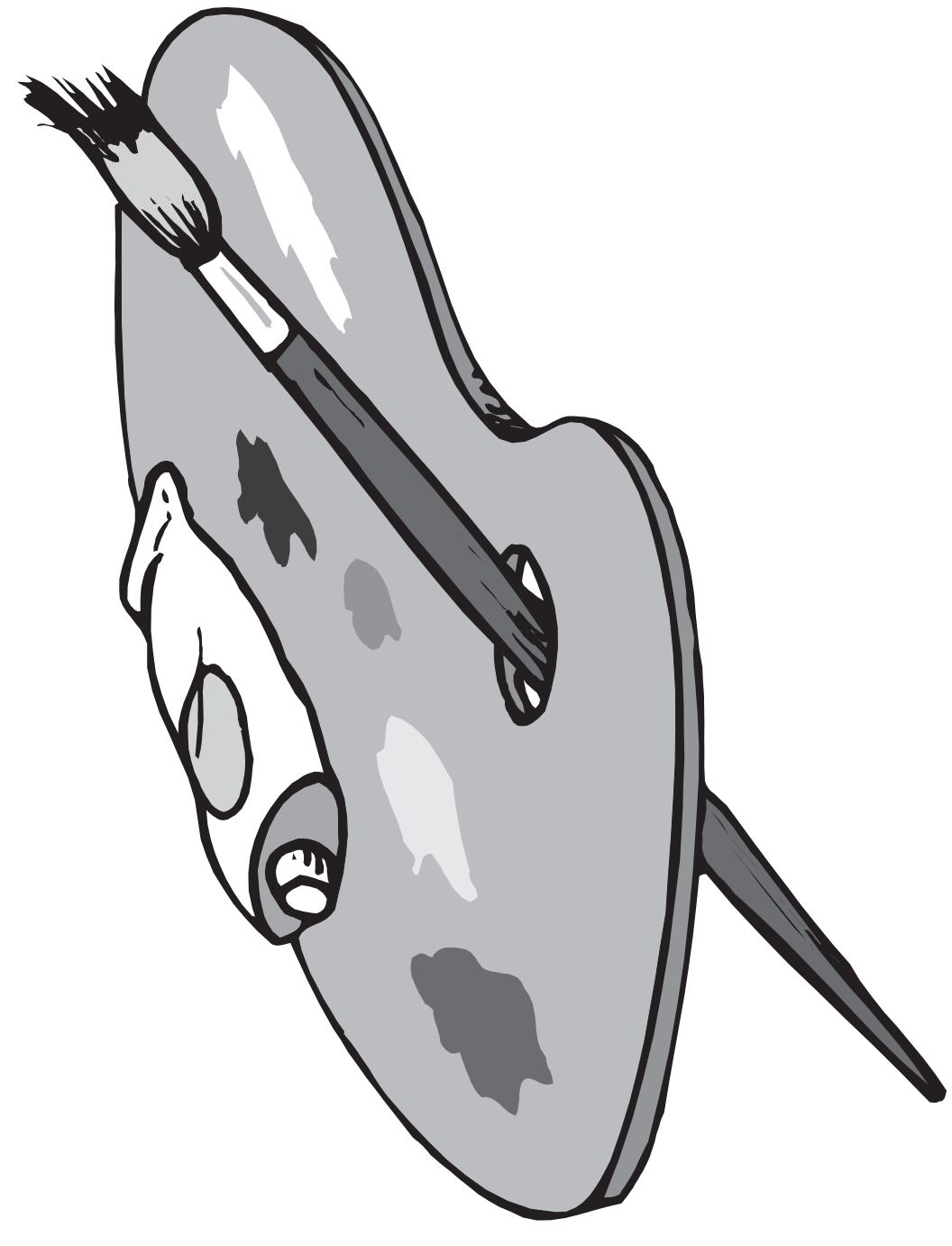
..... KI 1

(d) State two tertiary colours that contain blue.

Colour Colour

..... KI 2

Total (KI 9)



Architects use BSI symbols to represent features on their drawings.

(a) State what each of the architectural symbols shown at **A**, **B**, **C**, **D**, **E**, **F** and **G** represent.

A

B

C

D

E

F

G

KI 7



A



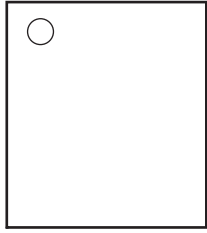
B



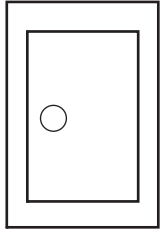
C



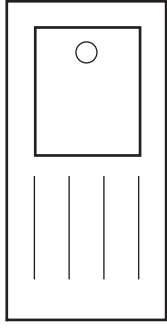
D



E



F



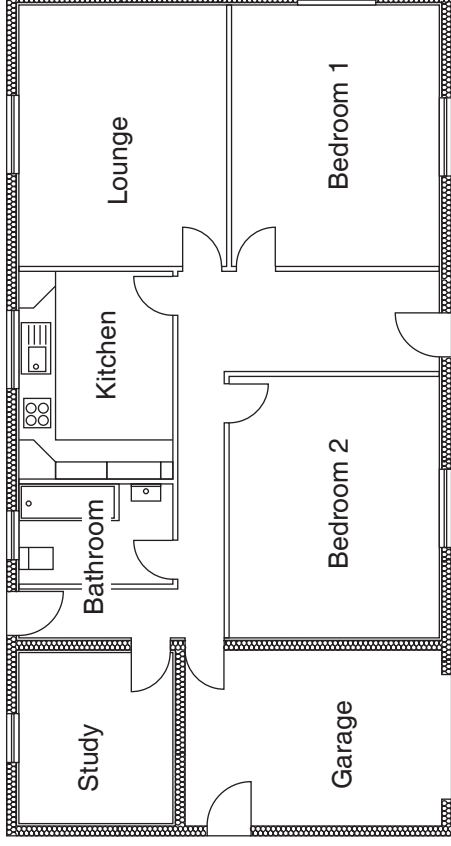
G

(b) Shown below is a plan used by architects.

State the name given to this type of plan.

Name

KI 1



(c) State the names given to two other types of plan commonly used by architects

Plan 1 **Plan 2**

KI 2

Total (KI 10)

Study the drawings shown opposite and answer the following questions.

- (a) State the names given to the types of views shown at **View P**, **View Q**, **View R** and **View S**.

View P **View Q**

View R **View S** **KI 4**

- (b) Explain why the type of view shown in **View P** was a good choice for the view.

Answer

..... **KI 1**

- (c) State the angle used at **M** on **View P**.

Angle M **KI 1**

- (d) State the full name given to points 1 and 2 on **View R**.

Answer **KI 1**

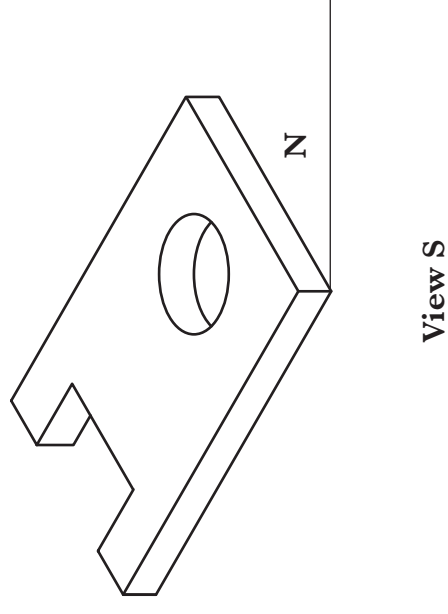
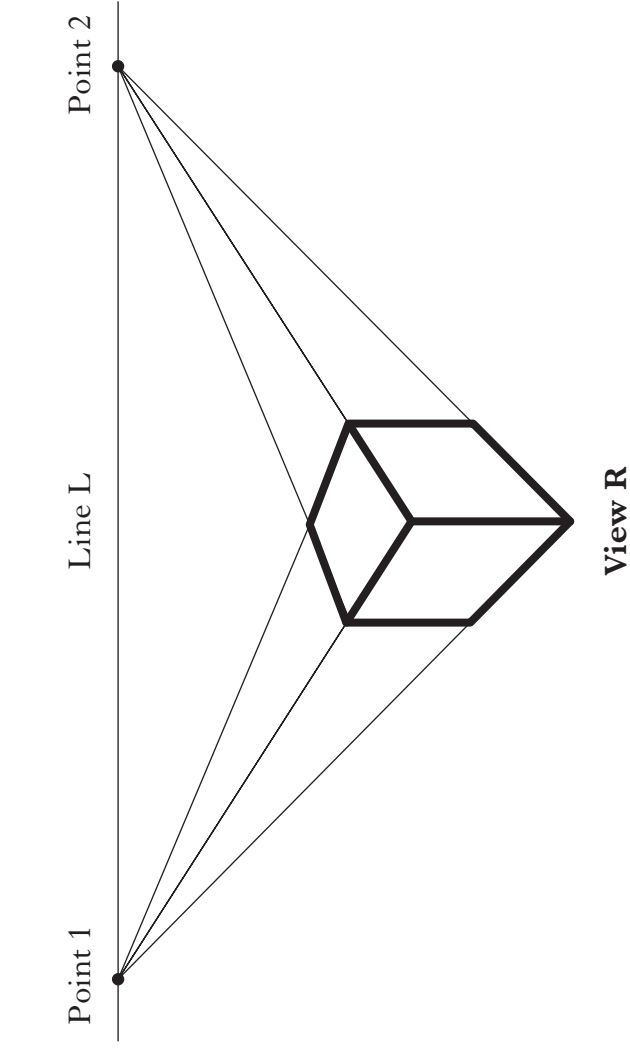
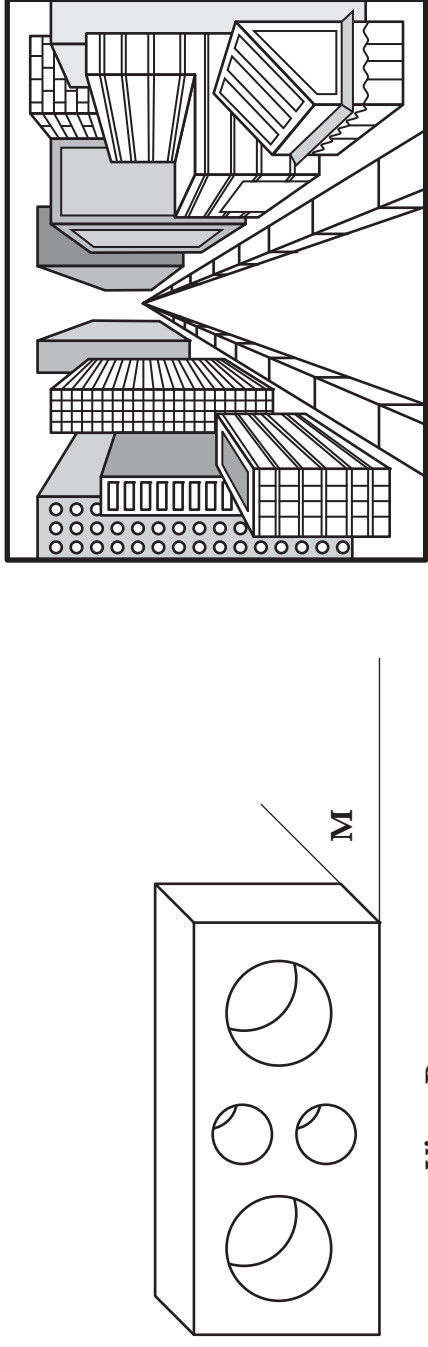
- (e) State the name given to line **L** on **View R**.

Line L **KI 1**

- (f) State the angle used at **N** on **View S**.

Angle N **KI 1**

Total (KI 9)



Fill in the missing information about the safety signs given below.



SIGN TYPE

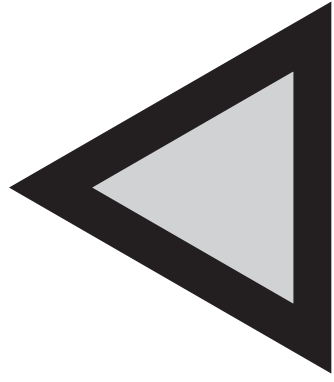
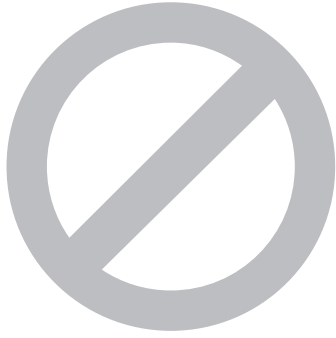
BACKGROUND COLOUR

BORDER COLOUR

None



Wear masks



Black

Total (KI 7)