

Colour theory is an important part of your Illustration and Presentation folio.

(a) Indicate with a tick (✓) in the table below which colours are primary, secondary and tertiary.

COLOUR	PRIMARY	SECONDARY	TERTIARY
Red			
Blue-Green			
Orange			
Green			
Red-Violet			
Yellow			

KI 6

(b) Using the colour wheel given:

(i) state **one** colour that is in harmony with blue;

Colour

KI 1

(ii) state **one** colour that is in contrast with blue.

Colour

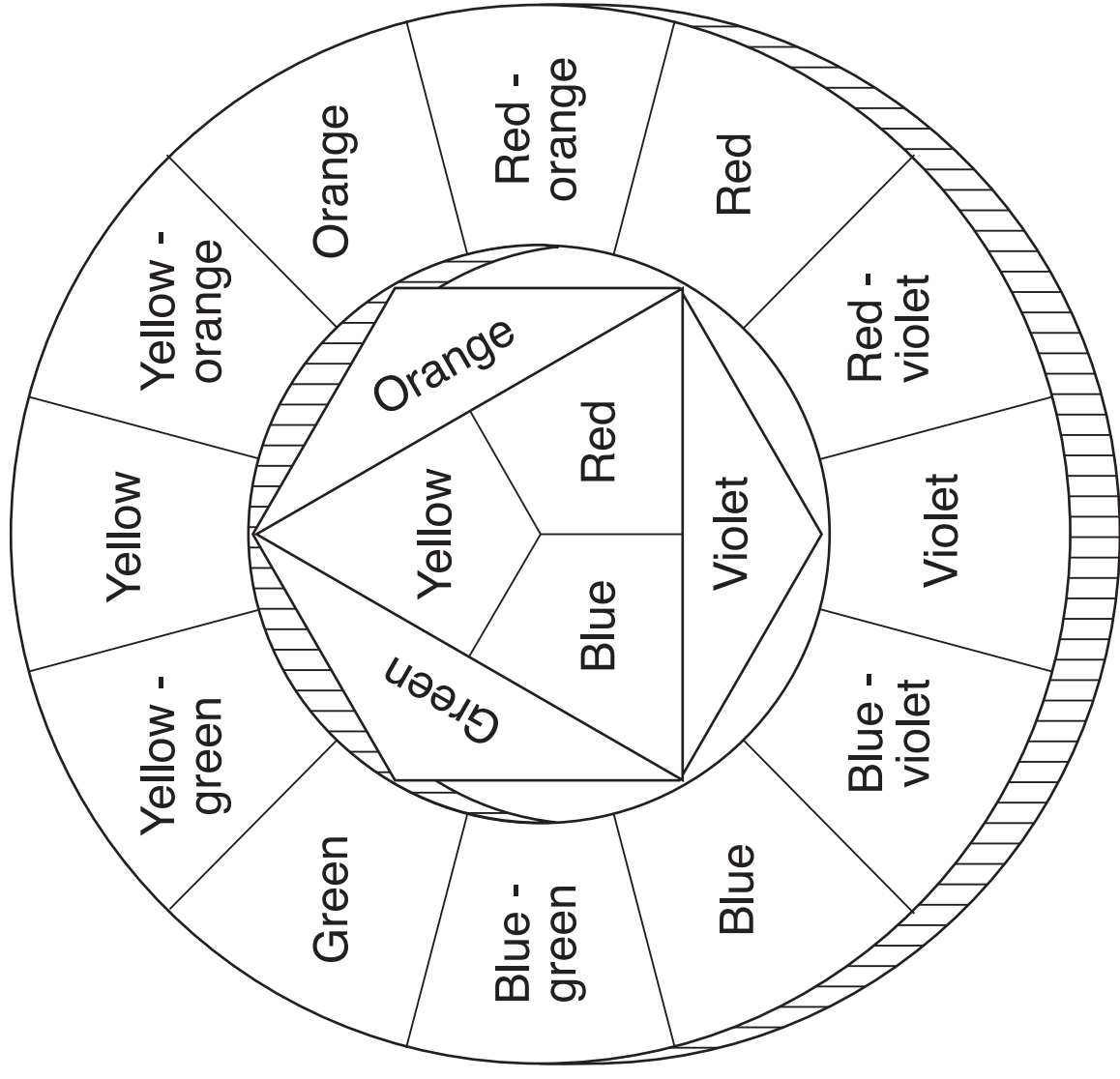
KI 1

(c) State what must be added to a colour to make it a tint of that colour.

Answer

KI 1

Total (KI 9)



When producing work on computers you need hardware devices and software packages.

(a) A list of computer software packages is given.

- DTP
- Illustration/Paint
- Word Processing
- 2-D CAD

Using the above list, select the software packages that would be used in the following situations.

SITUATION	SOFTWARE USED
Print a display with text and graphics	
Produce an orthographic drawing with dimensions	
Produce a computer generated colour graphic	

KI 3



(b) A list of computer hardware is given.

- Mouse
- Inkjet Printer
- Keyboard
- Scanner

Using the above list, select the hardware devices that would be used in the following situations.

SITUATION	HARDWARE DEVICES
Obtain a hard copy of an orthographic drawing	
Input text	
Copy a manual drawing to the computer's memory	

KI 3

Total (KI 6)

Complete the table below by placing a tick (✓) to show whether the statement is an advantage or disadvantage of Computer Aided Graphics

Statement	Advantage	Disadvantage
The need to train staff in the use of computers		
The ability to create a library of commonly used parts		
The speed with which mistakes can be changed		
The cost of updating the software packages used		
The possible loss of data		
The storage of drawings takes up less space		
The speed with which new drawings are produced		
The greater accuracy of drawings		

KI 8

Total (KI 8)

A drawing of a lathe faceplate is given in Drawing X.

A list of the line types is given.

- Dimension
- Hidden
- Hatching
- Cutting plane
- Outline
- Centre

(a) Complete the table below by adding the names of the line types from the above list shown at 1, 2, 3, 4, 5 and 6 on Drawing X.

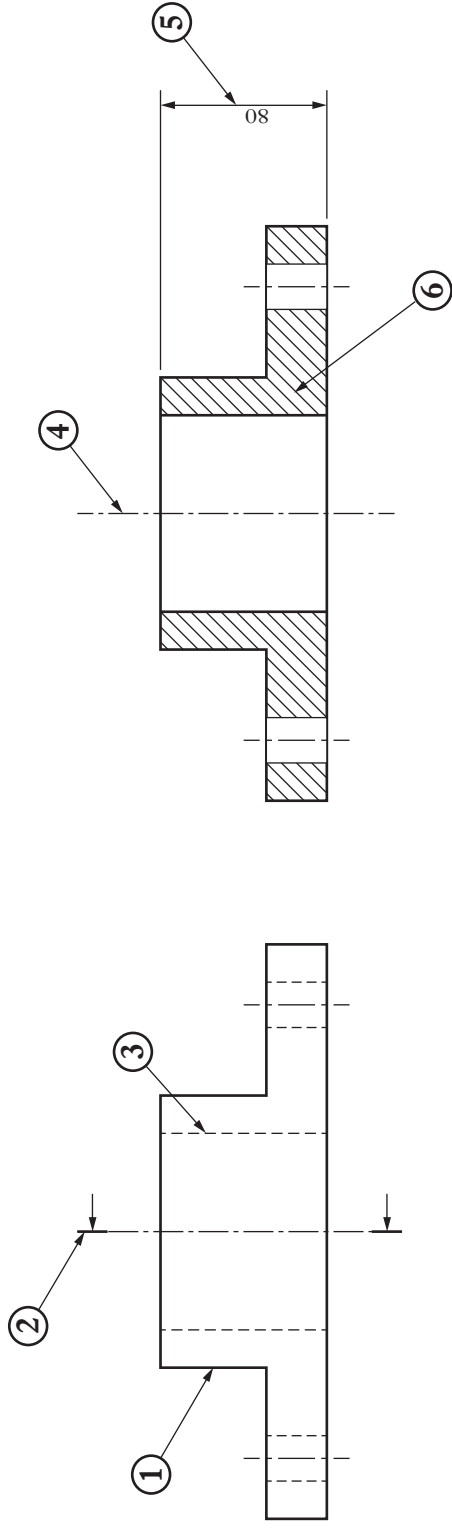
Number	Line Type
1	
2	
3	
4	
5	
6	

KI 6

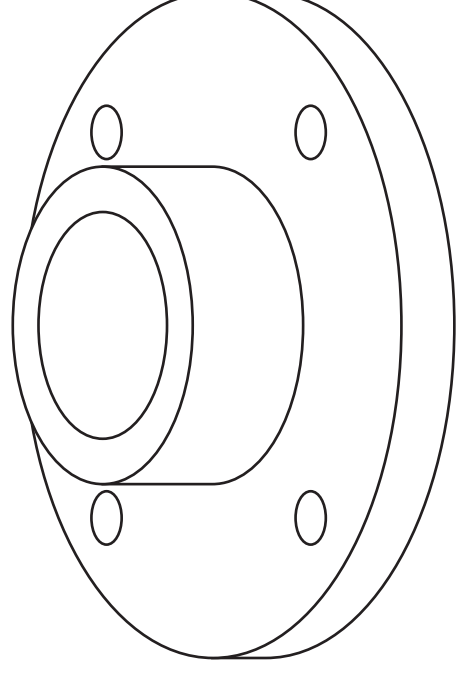
(b) State the type of view shown in View Y.

View Y KI 1

Total (KI 7)



Drawing X



View Y